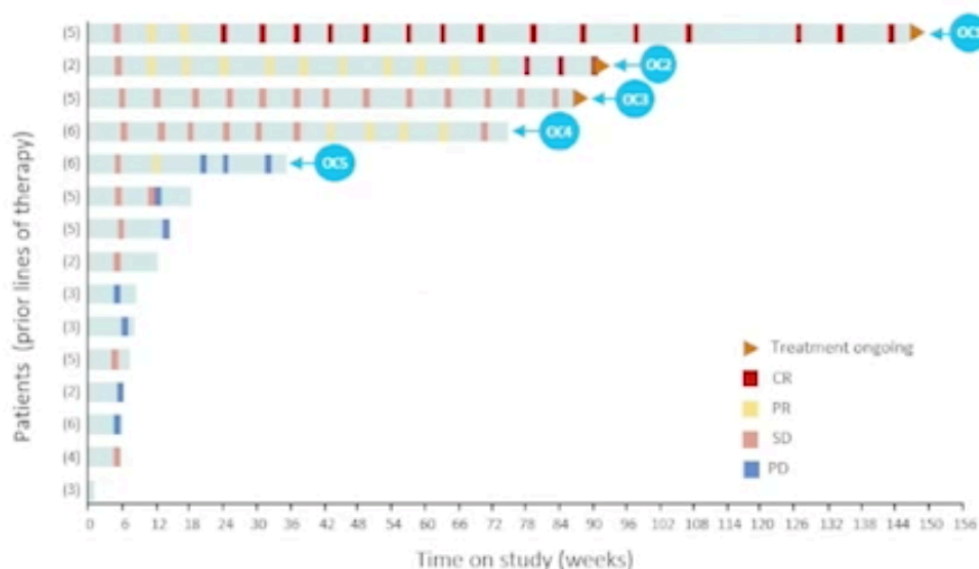


# Antitumor activity of nemvaleukin + pembrolizumab



## Summary of patient experience

| Patient | Age (years) | Number of prior regimens/<br>Prior therapies       | Best overall response* | Maximum change in target lesions (%) | Time on therapy (weeks) |
|---------|-------------|--|------------------------|--------------------------------------|-------------------------|
| OC1     | 48          | 5: CBP/PAC/BEV, CDDP/GEM, CBP/PLD, PCA, CBP/DOC    | CR                     | ↓ 70                                 | 146 ▶                   |
| OC2     | 83          | 2: CBP/PAC/DOC, CBP/DOC/NIR/TAM                    | CR                     | ↓ 100                                | 90 ▶                    |
| OC3     | 83          | 5: CBP/PAC, CBP, CBP/PAC/CAP, CBP/PLD/PEG, CBP/PLD | SD                     | ↓ 28                                 | 86 ▶                    |
| OC4     | 75          | 6: CBP/PAC, NIR, PLD/BEV, CBP/GEM, TOP, NIR        | PR                     | ↓ 41                                 | 75                      |
| OC5     | 60          | 6: CBP/PAC, CBP/PLD, CBP/BEV, PAC/BEV, BEV, PLD    | uPR                    | ↓ 45                                 | 36                      |

▶ Treatment ongoing.

- 5 patients with PROC had clinically meaningful benefit, 4 of whom were on treatment > 1 year
  - 4 objective responses: 2 CRs, 2 PRs (1 unconfirmed); 1 SD for > 1.5 years
  - 3 of these patients remain on treatment
- ORR was 28.6% and DCR was 71.4% in 14 evaluable patients<sup>b</sup> who received nemvaleukin 3 µg/kg IV + pembrolizumab