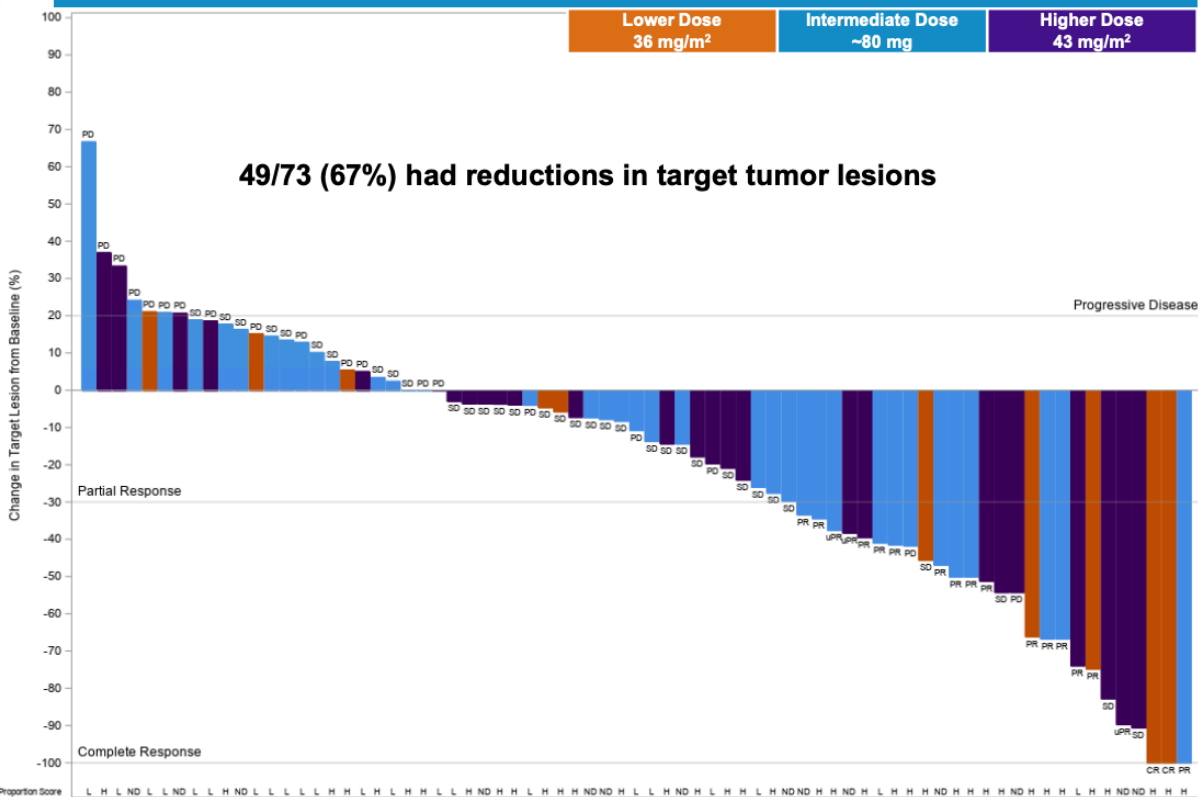


Clinically Meaningful Efficacy with Deep Responses, Consistent Across Multiple Data Disclosures



Maximum % Change from Baseline in Target Lesions in Evaluable Patients with Ovarian Cancer (n=73**)



Best Response in Evaluable Patients with Ovarian Cancer (n = 75*)

	NaPi2b High (TPS \geq 75)	NaPi2b Low (TPS<75)	Not Yet Determined NaPi2b	All Patients
N	38	23	14	75
CR	2 (5)	0	0	2 (3)
PR	11 (29)	2 (9)	2 (14)	15 (20)
uPR	1 (3)	0	2 (14)	3 (4)
SD	19 (50)	8 (35)	7 (50)	34 (45)
PD	5 (13)	13 (57)	3 (21)	21 (28)
Confirmed ORR	13 (34)	2 (9)	2 (14)	17 (23)
DCR	33 (87)	10 (43)	11 (79)	54 (72)

Median Duration of Response in NaPi2b High: ~5 months

Data cut June 10, 2021
 Abbreviations: CR = complete response; PR = partial response; uPR = unconfirmed PR; H = High NaPi2b Expression; L = Low NaPi2b Expression; ND = NaPi2b Expression not yet determined or tissue not available; ORR = Objective Response Rate; DCR = Disease Control Rate
 *22 patients were not evaluable by RECIST 1.1: 10 deaths (4 disease progression, 2 pneumonitis, 2 sepsis, 1 viral pneumonia, 1 unknown); 5 patient withdrawals; 1 enrolled in hospice; 1 clinical progression; 4 discontinued treatment; 1 had not yet reached first scan
 **2 pts in waterfall plot excluded as post-baseline tumor measurement shows "Not Measurable", yet "PD" was assigned by Investigator in the response dataset