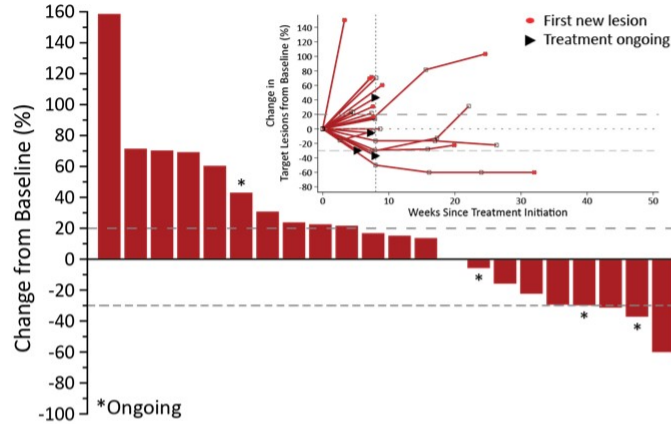


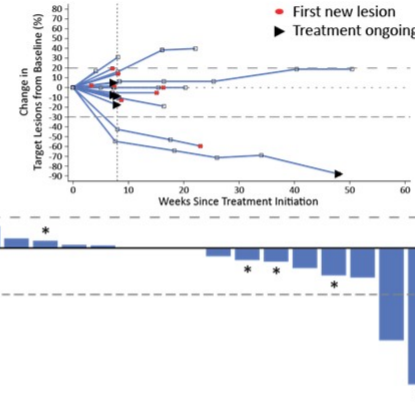
# MGD013 Monotherapy Cohort Expansion: Activity

Anti-tumor activity observed in multiple tumor types

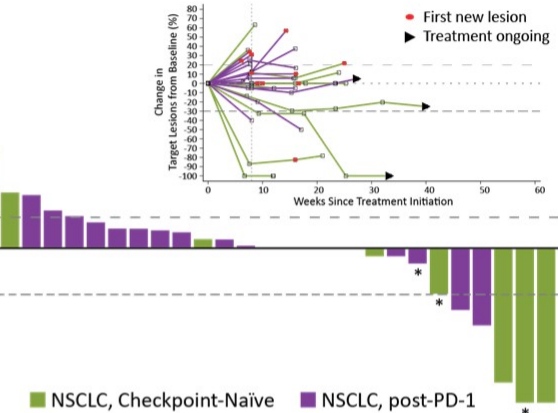
### Triple-negative Breast Cancer



### Epithelial Ovarian Cancer



### Non-small Cell Lung Cancer



	TNBC	EOC	NSCLC, CPI-Naïve	NSCLC, post-PD-1
Evaluable Patients	23	23	14	15
ORR (Confirmed)	4.3% (1/23)	8.7% (2/23)	14.3% (2/14)	0% (0/15)
ORR (Confirmed + Unconfirmed)	17.4% (4/23)	8.7% (2/23)	21.4% (3/14)	13.3% (2/15)
SD	34.8% (8/23)	43.5% (10/23)	50.0% (7/14)	53.3% (8/15)
DCR	39.1% (9/23)	52.2% (12/23)	64.3% (9/14)	53.3% (8/15)

Data cutoff: April, 25, 2020